



# ELLWOOD

YOUR METALS PARTNER, FROM MELT TO DISTRIBUTION

## **ElI**Cast<sup>®</sup>2 ALUMINUM PLATE

- ElICast<sup>®</sup>2 is a modified Alloy 2618 which is a heat treatable aluminum alloy for use in high-temperature applications up to 300° C (575° F)
- Excellent machinability properties with spectacular dimensional stability
- High strength at elevated temperatures
- High thermal fatigue
- Hardness
- Polishability
- High thermal and electrical conductivity

### **ADVANTAGES**

- Superior strength at elevated temperatures
- Dimensional stability during machining
- Consistent properties throughout entire plate
- Accepts anodized, nickel and other coatings
- Suitable for polished surface applications
- Increased mechanical properties
- Equiaxial fine grain structure
- Excellent welding characteristics
- Accepts mold finishes and textures



### **APPLICATIONS**

- Injection Molding
- Structural Foam
- Composite Tooling
- R.I.M. Molding
- R.T.M. Molding
- Rubber Molds
- Blow Molding
- Rotational Molding
- Automotive
- Aerospace
- Thermoforming



# ELLWOOD

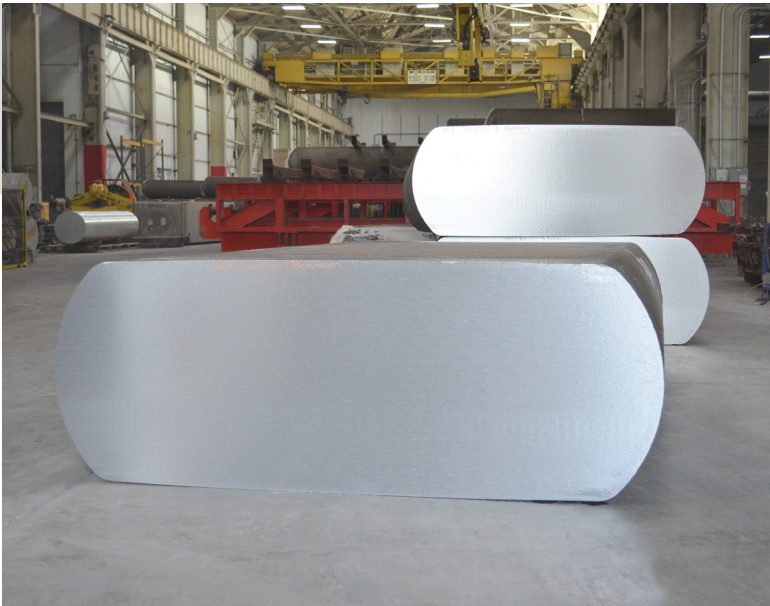
YOUR METALS PARTNER, FROM MELT TO DISTRIBUTION



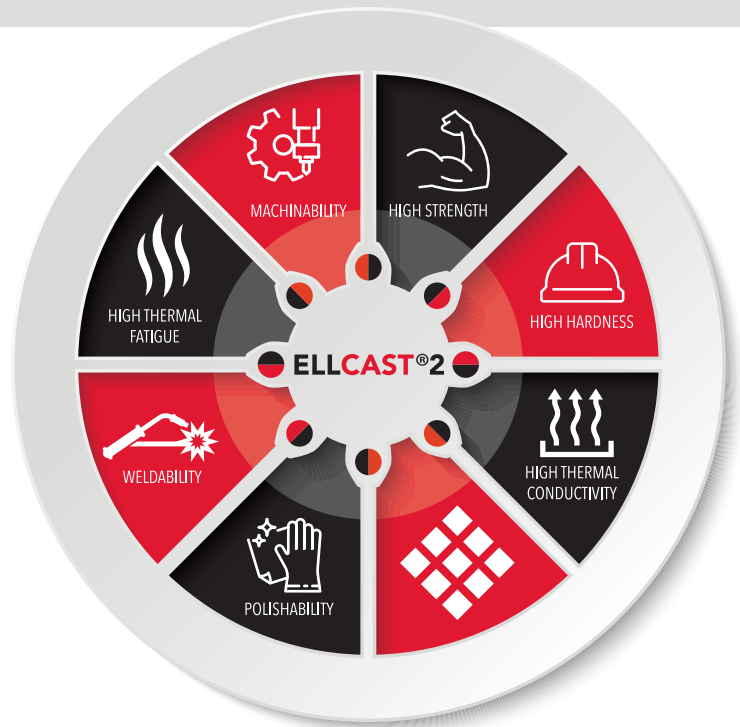
## AVAILABILITY

Thickness	Width	Length	Tolerance
1" – 28"	Max 66"	Max 168"	+0.250" - /-0.000"

Inquire with [ESM-USA-Sales@elwd.com](mailto:ESM-USA-Sales@elwd.com) for custom thicknesses and precision cut tolerances



## EllCast<sup>®</sup>2 ALUMINUM PLATE



## EllCast<sup>®</sup>2 Properties

Tensile Strength	39	ksi
Yield Strength	20	ksi
Elongation	12-16	%
Hardness	75	Brinell
Thermal Conductivity	85	BTU/ft h °F
Electrical Conductivity	37	% (IACS)
Coefficient Thermal Expansion	12.4 x 10 <sup>-6</sup>	µin/in (68-212 °F)
Elastic Modulus	10.8 x 10 <sup>3</sup>	ksi
Density	0.101	lb/in <sup>3</sup>

